

# abaa2025 building enclosure conference

Lessons learned – Trades that need to include an AVB discussion in their specification and preinstallation meetings

Corey S Zussman, AIA, NCARB, ALA, RBEC, RRC, REWC, RWC, RRO, CDT, CQM, CxA+BE, BECxP, CABS, LEED® AP BD+C; Level II Thermographer

AIA  
Continuing  
Education  
Provider



**AECOM** HUNT



# AIA continuing education

***Credit(s) earned on completion of this course will be reported to AIA CES for AIA members. Certificates of completion for both AIA members and non-AIA members will be available to download after the event. This course is registered with AIA CES for continuing professional education. As such, it does not include content that may be deemed or construed to be an approval or endorsement by the AIA of any material of construction or any method or manner of handling, using, distributing, or dealing in any material or product.***



**AIA  
Continuing  
Education  
Provider**

# Couse Description

**When designing a building envelope wall system, specifying, detailing, and having a pre-installation discussion about the backup substrate and façade elements, considering the water, air, vapor, and insulation systems detailing, is critical. This involves careful coordination with all façade trade elements, consideration of construction and installation tolerances, addressing the installation requirements for the substrate wall, water and air resistive barriers, insulation, and façade support system, and learning lessons from each installation. Each component must be thoroughly understood and specified within their respective specification sections to ensure comprehensive detailing. By understanding the necessary connections, material compatibility, tested systems, and limitations of construction materials, you can develop pre-installation conversation points within each building envelope and substrate meetings to proactively develop an advanced conversation about detailing, grasping the construction requirements for each component and incorporating lessons learned will enhance future detailing and specifications will significantly improve the chances of project success.**



# Learning Objectives

1. Discuss and dissect early structural design considerations to maintain the air, vapor, water, and insulation control systems, as well as the rainscreen façade support system to ensure adequate bid document detailing.
2. Understanding and include construction tolerances for systems and components to properly detail the substrate wall and air, vapor, water, and insulation control systems for different types of building façade installations.
3. Review different types of substrate and façade wall systems and their associated detailing to coordinate with the Specifications and detailing.
4. Apply different requirements and lessons learned about continuity, structural fastening detailing, wall membrane requirements, limitations and tolerances of systems, and what is needed for drawing and specification coordination and determine what discussion points to make during each pre-installation meeting of corresponding substrate and façade elements.





# COPYRIGHT MATERIALS

*This presentation is protected by US and International Copyright laws. Reproduction, distribution, display and use of the presentation without written permission of the speaker is Prohibited.*

**AECOM HUNT**



*© Corey S Zussman 2025 All Rights Reserved*

847.513.2126 [www.corey.zussman@aecom.com](mailto:www.corey.zussman@aecom.com)









IT'S ABOUT SEQUENCING ALL  
TRADES

*WHAT DO THE SPECIFICATIONS  
INDICATE?*





# Compatibility with air barrier components & other building materials



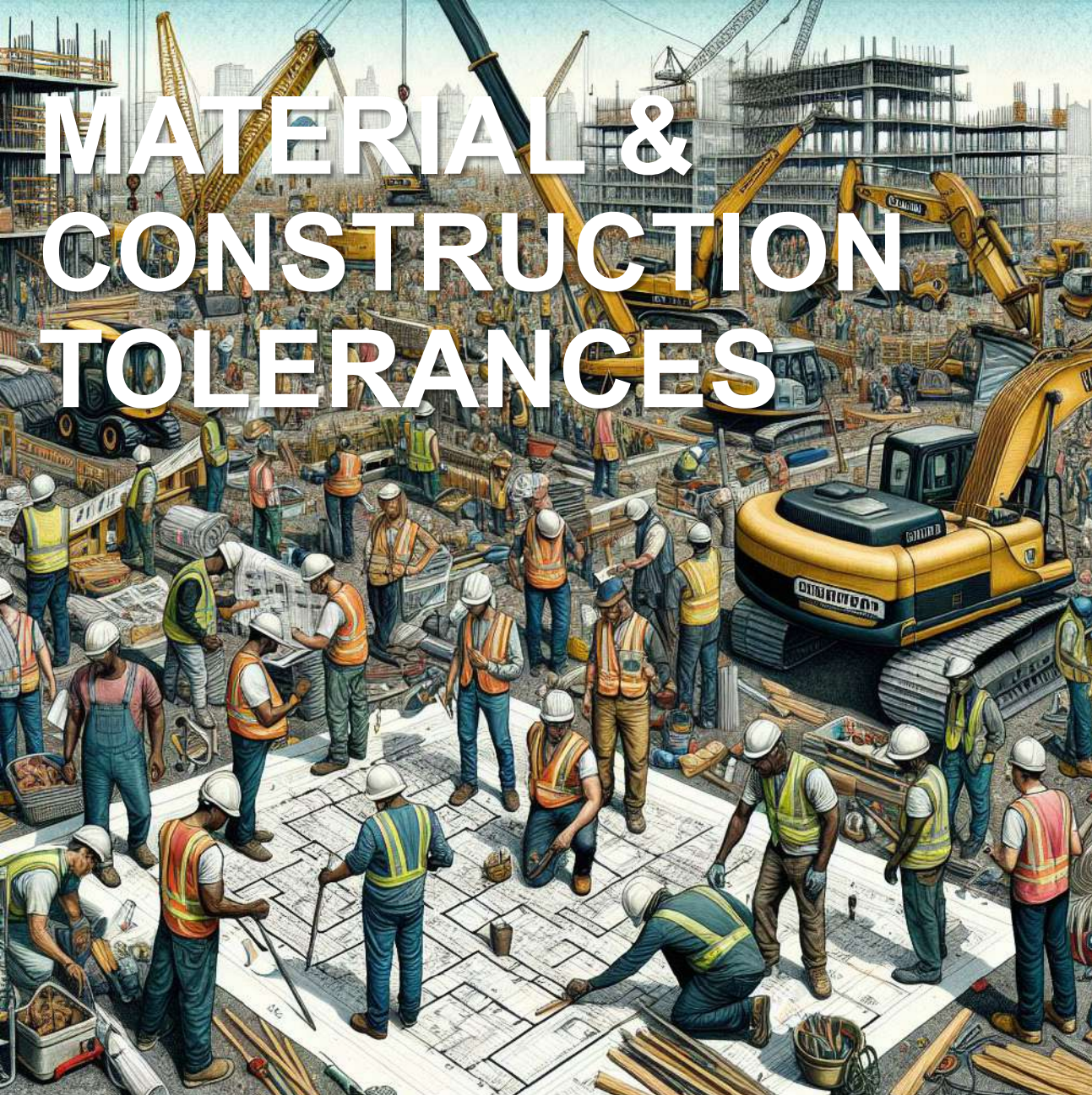
Flashing	Acrylic Liquid Air Barrier	Asphalt Liquid Air Barrier	Polyether Liquid Air Barrier	Silicone Liquid Air Barrier	Peel & Stick Asphalt Membrane	Peel & Stick Butyl Membrane	Spray Polyurethane Foam	Polystyrene Insulation	Polyiso Insulation
Copper Asphalt	Not Compatible	Not Compatible	Not Compatible	Not Compatible	Not Compatible	Not Compatible	Not Compatible	Not Compatible	Not Compatible
Copper Drainage	Compatible	Compatible	Compatible	Compatible	Compatible	Compatible	Compatible	Compatible	Compatible
Copper Fabric (Asphalt)	Not Compatible	Not Compatible	Not Compatible	Not Compatible	Not Compatible	Not Compatible	Not Compatible	Not Compatible	Not Compatible
Copper Fabric (Non-Asphaltic)	Compatible	Compatible	Compatible	Compatible	Compatible	Compatible	Compatible	Compatible	Compatible
Copper Sheet Metal	Compatible	Compatible	Compatible	Compatible	Compatible	Compatible	Compatible	Compatible	Compatible
EPDM	Compatible	Not Compatible	Compatible	Compatible	Not Compatible	Compatible	Caution	Caution	Compatible
EPDM Self-Adhered (Asphalt)	Compatible	Not Compatible	Compatible	Not Compatible	Not Compatible	Compatible	Caution	Caution	Compatible
PVC	Caution	Not Compatible	Caution	Caution	Not Compatible	Not Compatible	Not Compatible	Not Compatible	Compatible
PVC Thermoplastic Vinyl	Compatible	Compatible	Compatible	Compatible	Compatible	Compatible	Caution	Compatible	Compatible
PVC Thermoplastic Asphalt SA	Not Compatible	Caution	Compatible	Not Compatible	Caution	Caution	Caution	Caution	Compatible
Rubberized Asphalt (Peel & Stick)	Not Compatible	Not Compatible	Compatible	Not Compatible	Caution	Caution	Caution	Caution	Compatible
Stainless Steel Drainage	Compatible	Compatible	Compatible	Compatible	Compatible	Compatible	Compatible	Compatible	Compatible
Stainless Steel Fabric	Compatible	Compatible	Compatible	Compatible	Compatible	Compatible	Compatible	Compatible	Compatible
Stainless Steel Self-Adhered	Compatible	Compatible	Compatible	Compatible	Compatible	Compatible	Compatible	Compatible	Compatible
Stainless Steel Sheet Metal	Compatible	Compatible	Compatible	Compatible	Compatible	Compatible	Compatible	Compatible	Compatible
Not Compatible	From the ABAA's Flashings and Terminations Committee								
Caution									
Compatible									

From the ABAA's Flashings and Terminations Committee



**Look in both directions!**





# MATERIAL & CONSTRUCTION TOLERANCES

I am frequently asked about installation and material tolerances after the installation...

Your specifications should clearly identify what the tolerances are for each material and system so that the next trade is able to properly coordinate before the work starts.

Don't wait until it is too late – ask the questions in the preinstallation meetings for each trade and think what is next in line.



## Installation of:

- ✓ Concrete
- ✓ Precast
- ✓ Masonry
- ✓ Steel
- ✓ CFMF
- ✓ Curtainwall/  
Storefront

## Material:

- CMU
- Masonry
- Precast
- Steel
- CFMF
- Insulation
- Cladding



# List of References:

**Handbook of Construction Tolerances 2ed**

**by David Kent Ballast, AIA, CSI**

**ACI 117, Specifications for Tolerance for Concrete & Materials**

**MNL 116 / MNL 117, Quality Control for Structural Concrete / Architectural Concrete**

**MNL-135, Tolerance Manual for Precast & Prestressed Concrete**

**ASTM A6, Standard Specification for General Requirements for Rolled Structural Steel Bars, Plates, Shapes, & Sheet Pilings**

**AISC 303, Code of Standard Practice for Steel Buildings & Bridges**

**ASTM C55, ASTM C90, ASTM C129, ASTM 744 – CMU**

**ASTM C62, ASTM C216, ASTM 652, ASTM C1088 - Masonry**

**ACI 530.1/ASCE 6/TMS 602 – Specifications for Masonry Structures Dimension Stone Design Manual VI**

**Indiana Limestone Institute 21<sup>st</sup> ed.**

**AAMA MCWM 1-89, Metal Curtainwall Manual**

**ANSI H35.2-2003, Dimensional Tolerances for Aluminum Mill Products**

**GANAGlazing Manual**

**SFM-1-87, Aluminum Storefront and Entrance Manual**

# MATERIAL & CONSTRUCTION TOLERANCES

**Tolerances need to be based on many items, including:**

- **Deflection**
- **System(s) tolerances**
- **Material Installation Tolerance**



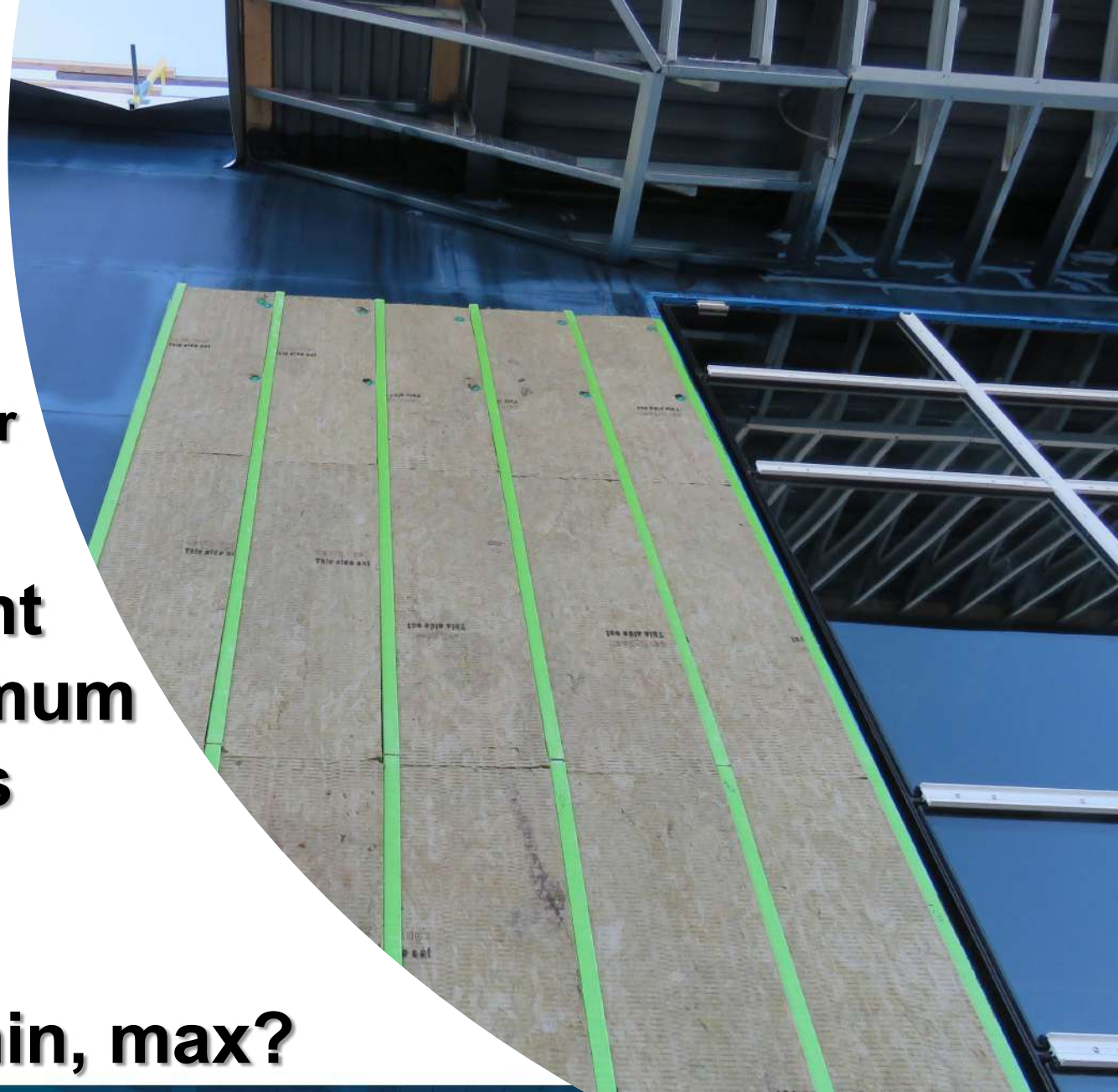


# MATERIAL & CONSTRUCTION TOLERANCES

Dimensions to the outside of the veneer might modify the gap size based on different manufacturers of the veneer.

**Decide what is important**

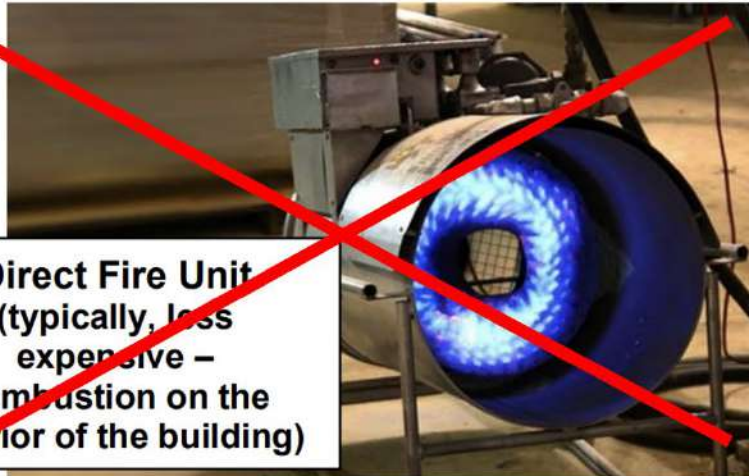
- Provide minimum / maximum
  - Insulation thickness or R-value
  - Air gap size
- Overall Dimensions, hold, min, max?







Two typical systems are direct fire (propane or natural gas) and indirect fire system. Direct fire units are similar to a fireplace without a chimney. Indirect units are similar to a home furnace with a flue to the exterior.



**Direct Fire Unit**  
(typically, less expensive – combustion on the interior of the building)

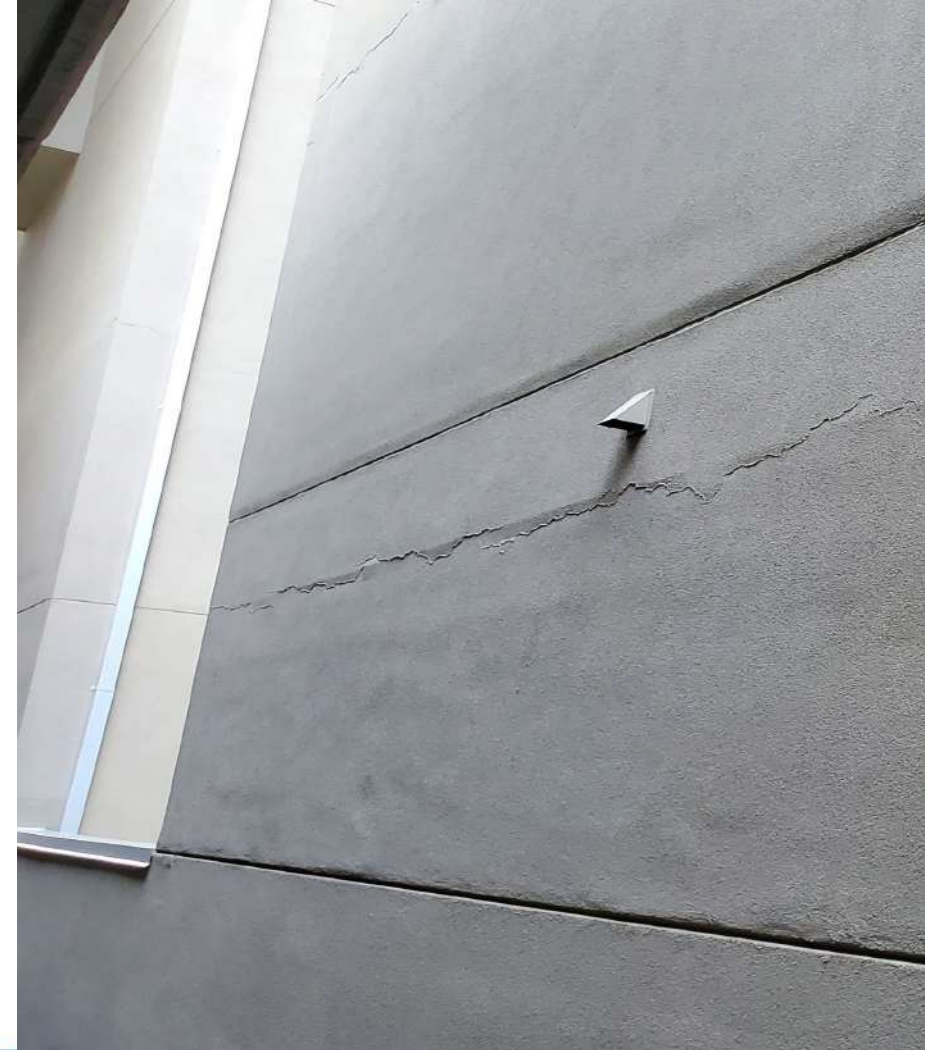
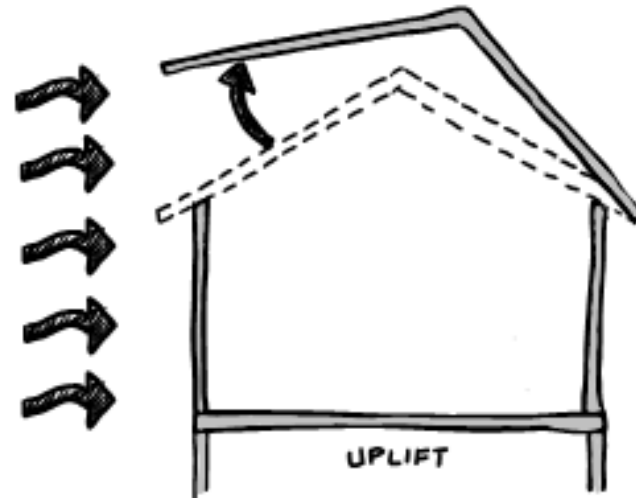
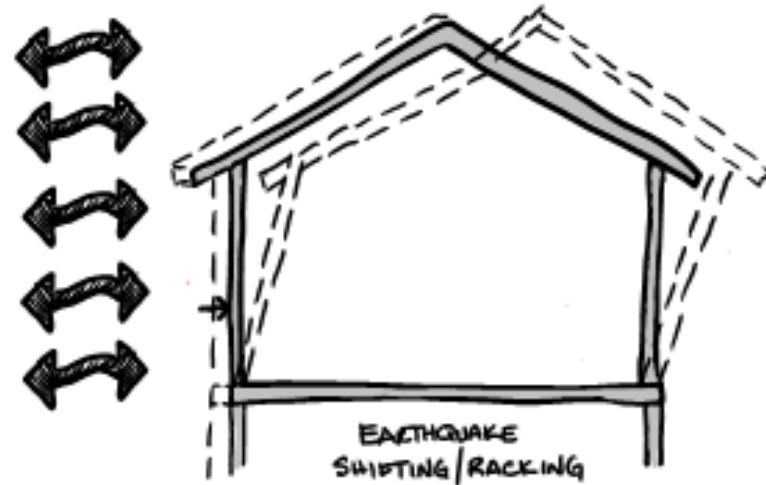
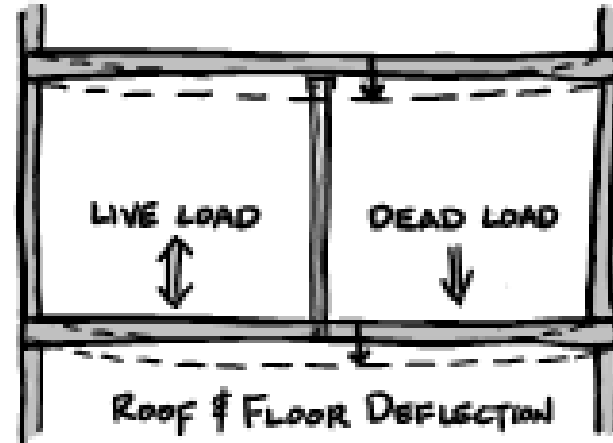
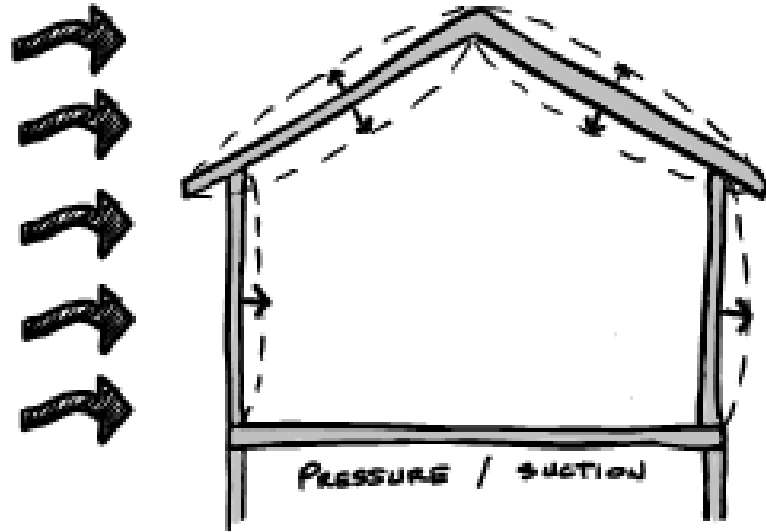


**Indirect Fire Unit**  
(fire is exterior of space and heated air blown into the building)

If your work is happening in colder months, ask the General Contractor how they plan to temporarily heat the interior.

Make sure that they are using  
**INDIRECT HEAT**  
not  
Direct fired propane or natural gas!

# BUILDING DEFLECTIONS



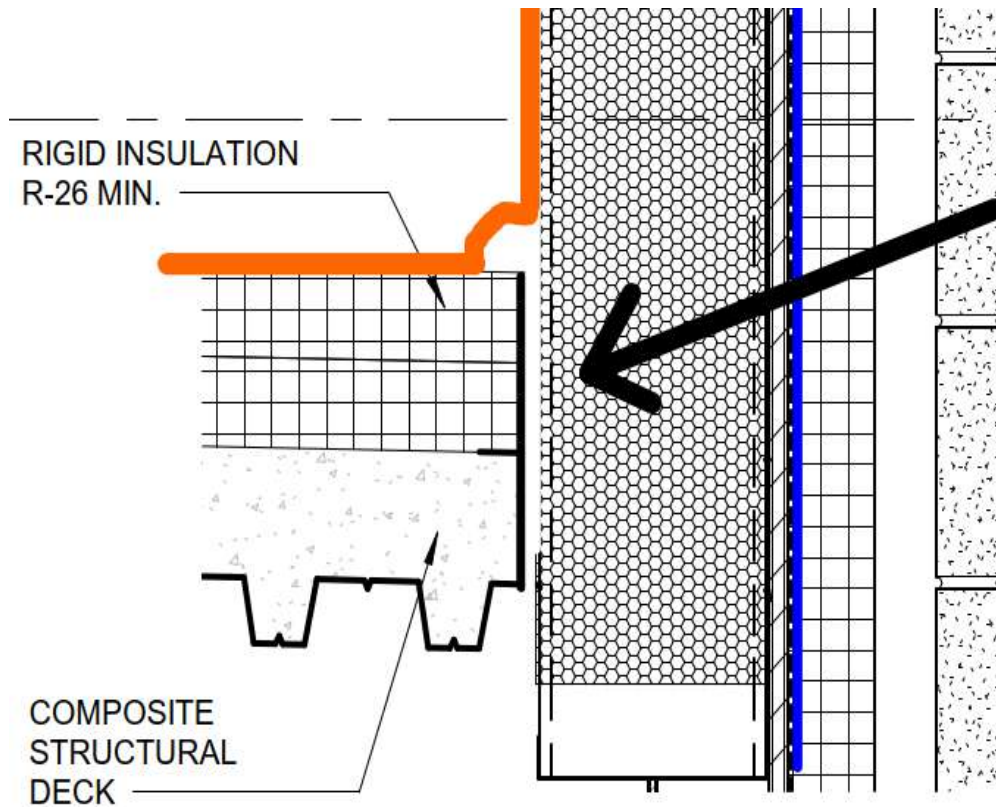
A close-up photograph of a metal mesh screen, likely from a window or door, mounted on a dark frame. The screen is visibly distorted, with a significant inward deflection in the center, creating a bulge. The background shows a blurred view of a building's exterior with light-colored panels.

# Live Load Deflection

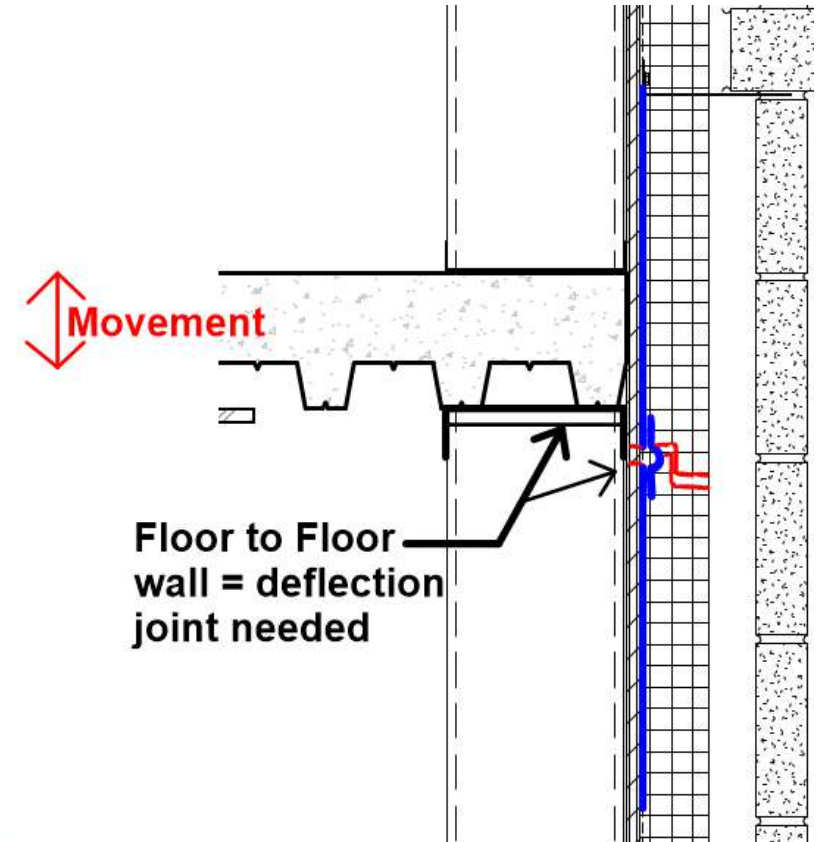


# Floor slab edge detailing

substrate stops and starts at the floor/floor or floor/roof = Deflection  
substrate “flys-by” the Floor/floor or floor/roof = No Deflection



Wall is  
deadloaded on  
foundation or  
floor below and  
bypasses the floor  
or roof (in this  
case) - therefore,  
no deflection is  
taken in the wall.





**Talk to the insulator about how the insulation is attached – peel stick material can pull the AVB away from the substrate**



# The Importance of Updated Data Sheets

## Limitations

- EXP Sheathing is not a finished surface, nor is it a substrate for the direct application of joint compound, stucco, paint or textures in exterior wall applications. Placement of vapor retarders within the wall assembly is the responsibility of the design professional.
- Do not use EXP Sheathing as a nailing base. Mechanical fasteners should pass through the sheathing and engage the framing member behind the panel.
- Install materials used in conjunction with EXP Sheathing per the respective manufacturer's recommendations.
- EXP Sheathing is resistant to weather, but it is not intended for immersion in water and should not be subjected to ponding or to cascading water conditions.
- Do not apply EXP Sheathing below grade. Comply with building code grade clearance requirements.
- Do not laminate EXP Sheathing directly to masonry surfaces; fasten panels to furring strips or framing.
- EXP Sheathing is not intended for tile applications. For tile applications, Gold Bond® BRAND EXP® Tile Backer or PermaBase® BRAND Cement Board is recommended.
- Gypsum sheathing is not a replacement for specific structurally engineered sheathing in shear wall designs.
- Adhesive-only application of EXP Sheathing to framing is not recommended.
- Framing supports must not exceed 24 in. (610 mm) o.c.
- Design details, including fasteners, sealants and control joints, must be properly installed per system specifications. Openings and penetrations must be properly flashed and sealed according to code, building design and weather-resistive barrier manufacturer's instructions. Failure to do so will void the warranty; refer to EXP Sheathing warranty for terms, conditions and limitations.
- Avoid conditions that will create moisture in the air and condensation on EXP Sheathing. The use of unvented or improperly vented forced air heaters in the building creates water vapor volumes which can condense on the exterior sheathing. The use of these heaters and any resulting damage is not the responsibility of National Gypsum. Please consult heater manufacturer for proper use and ventilation.

111046 Rev. 3/19

**So, can you spot the difference?**  
***We have an extra paragraph under limitations. This is extremely important for the entire team to understand...including the subcontractor!***

***The Manufacturer determined an issue and placed that issue under the limitations section, telling us that there might be a new problem that we need to understand.***

## Limitations

- EXP Sheathing is not a finished surface, nor is it a substrate for the direct application of joint compound, stucco, paint or textures in exterior wall applications. Placement of vapor retarders within the wall assembly is the responsibility of the design professional.
- Do not use EXP Sheathing as a nailing base. Mechanical fasteners should pass through the sheathing and engage the framing member behind the panel.
- Install materials used in conjunction with EXP Sheathing per the respective manufacturer's recommendations.
- EXP Sheathing is resistant to weather, but it is not intended for immersion in water and should not be subjected to ponding or to cascading water conditions.
- Do not apply EXP Sheathing below grade. Comply with building code grade clearance requirements.
- Do not laminate EXP Sheathing directly to masonry surfaces; fasten panels to furring strips or framing.
- EXP Sheathing is not intended for tile applications. For tile applications, Gold Bond® BRAND EXP® Tile Backer or PermaBase® BRAND Cement Board is recommended.
- Gypsum sheathing is not a replacement for specific structurally engineered sheathing in shear wall designs.
- Adhesive-only application of EXP Sheathing to framing is not recommended.
- Framing supports must not exceed 24 in. (610 mm) o.c.
- Design details, including fasteners, sealants and control joints, must be properly installed per system specifications. Openings and penetrations must be properly flashed and sealed according to code, building design and weather-resistive barrier manufacturer's instructions. Failure to do so will void the warranty; refer to EXP Sheathing warranty for terms, conditions and limitations.

111046 Rev. 6/17



# Specifications to Review

CONCRETE

MASONRY

PRECAST CONCRETE

CFMF & SHEATHING

- GYPSUM BOARD
- WOOD

PREFABRICATED CFMF PANELS

SHELF ANGLES

FIREPROOFING

MEP – FP PENETRATIONS

INTERIOR AVB

ROOFING

SOUND DECK





# Concrete





# Form Release

**Ask the General Contractor for the Form Release from the Concrete Contractor ASAP to send to the AVB MFR for review As Soon As Possible**

There are two different family types of form release:

## Barrier Type

*Petroleum based*

*Wax based*

*Silicone based*

- *Can stain concrete*
- *Create surface voids*
- *Issues with form removal in cold & hot temperatures*
- ***Likely to prevent adhesion of coatings, waterproofing, or AVB***
- *Not recommended for architectural concrete*

## Chemically Active / Reactive

*Partially reactive (buffered)*

*Fully reactive*

- *Both types produces a surfactant (soap) that prevents bonding to the formwork by creating a reaction with the calcium ions in the cement paste based on the reactivity.*
- *Winter grade version is available*
- *Organic chemical reaction utilizing fatty acids.*

### ***BEST FOR COATINGS, WATERPROOFING, AND AVB***

- ***Buffered*** agents produce an improved soap film that helps remove entrapped air, promoting a better flow of a thin skin of cement paste at the surface. This produces fewer bug holes, stains, and surface irregularities. Best for architectural concrete.
- ***Fully Reactive*** agents provides a basic soap film which produces fewer bug holes, stains, and surface irregularities than the barrier type.





# Concrete Surface Expectations

## Surface Finish - 1.0

- No formwork facing material is specified
- Patch voids larger than 1.5" wide or ½" deep
- Remove projections greater than 1"
- Tie holes need not be patched
- **Surface Tolerance Class D**

## Surface Finish - 3.0

- Patch voids larger than ¾" wide or ½" deep
- Remove projections greater than 1/8"
- Tie holes need to be patched
- **Surface Tolerance Class A**

## Surface Finish - 2.0

- Patch voids larger than ¾" wide or ½" deep
- Remove projections greater than ¼"
- Tie holes need to be patched
- **Surface Tolerance Class B**



# Concrete Surface Expectations

## Surface tolerance: ACI 347 – Section 5.4

*Class A: is suggested for surfaces prominently exposed to public view where appearance is of special importance. OR COATED SURFACE.*

*CLASS B: is intended for course-textured, concrete formed surfaces intended to receive plaster, stucco, or similar.*

*CLASS C: is a general standard for permanently exposed surfaces where other finishes are not specified.*

*CLASS D: is a minimum quality requirement for surfaces where roughness is not objectionable, usually applied where surfaces will be permanently concealed.*

## Abrupt Irregularities: ACI 347 – table 5.3.1

*Abrupt irregularities measured within 1" of the irregularity. Gradual surface irregularities shall be measured by determining the gap between concrete and near surface of a 5'-0" straight edge, measured between contact points:*

**CLASS A: 1/8"**

**CLASS B: 1/4"**

**CLASS C: 1/2"**

**CLASS D: 1"**





# Concrete Surface Expectations

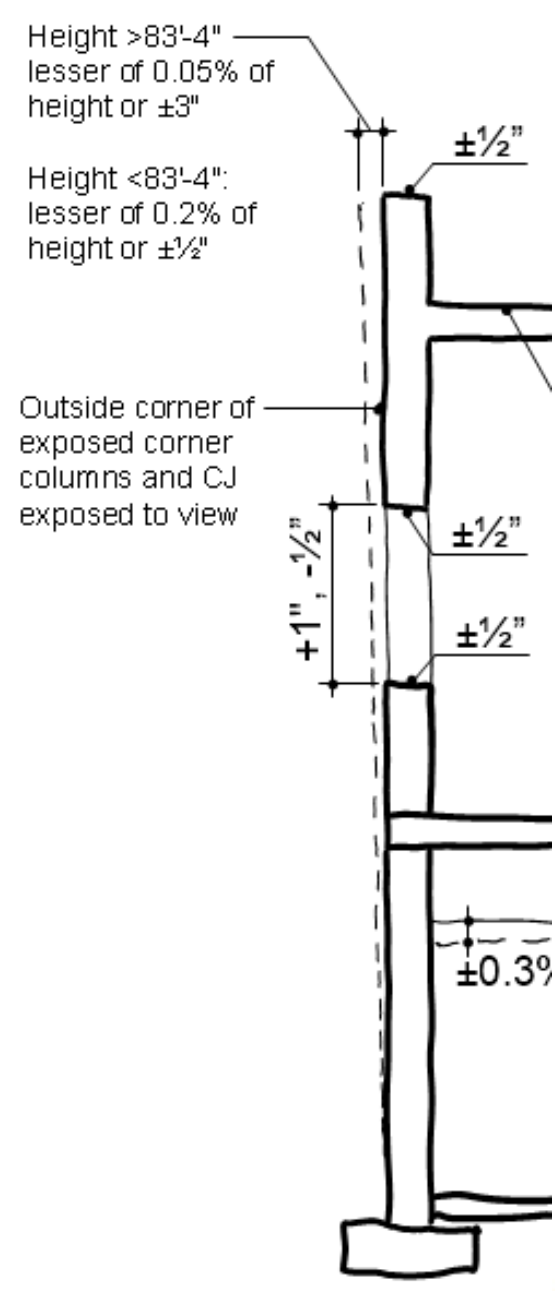
*Review how the tie holes are being patch and with what material*

*Steel at least 1”  
back*

*Cementitious patch  
material only.*



# Concrete Tolerance Expectations





# Masonry



The background image shows a large, multi-story building under construction. The walls are made of light-colored concrete blocks. The top of the building is covered with a white plastic sheeting. On the right side, a worker wearing a yellow safety vest and a hard hat is standing on a red metal scaffolding. The sky is overcast and grey.

# Top of wall protection

***Drive by the job site...talk to the General Contractor and make sure the specifications are being followed.***



# Wall Protection



**Walk around the site during construction**

**Protection to every opening is needed from the top to prevent excessive moisture**

**Even bond beams!**

**Interior issues will be exterior issues**



# Back of Wall Protection



**The back of wall  
needs to be  
protected**

**When, how, and by  
whom?**



**Make sure that the  
masonry flashing  
does not go into the  
CMU**





# CMU Site Storage

**Storage inside or outside should be protected per specifications**

**Look for a breathable tarp**

**Not plastic!**

**CMU should not be on a plywood sheet, as this will hold water**



**Efflorescence will create a debonding surface for the liquid or peel and stick.**

**Make sure that the mason cleans the wall if efflorescence develops**

**Only clean with a wire brush, little water.**






# Type of CMU matters

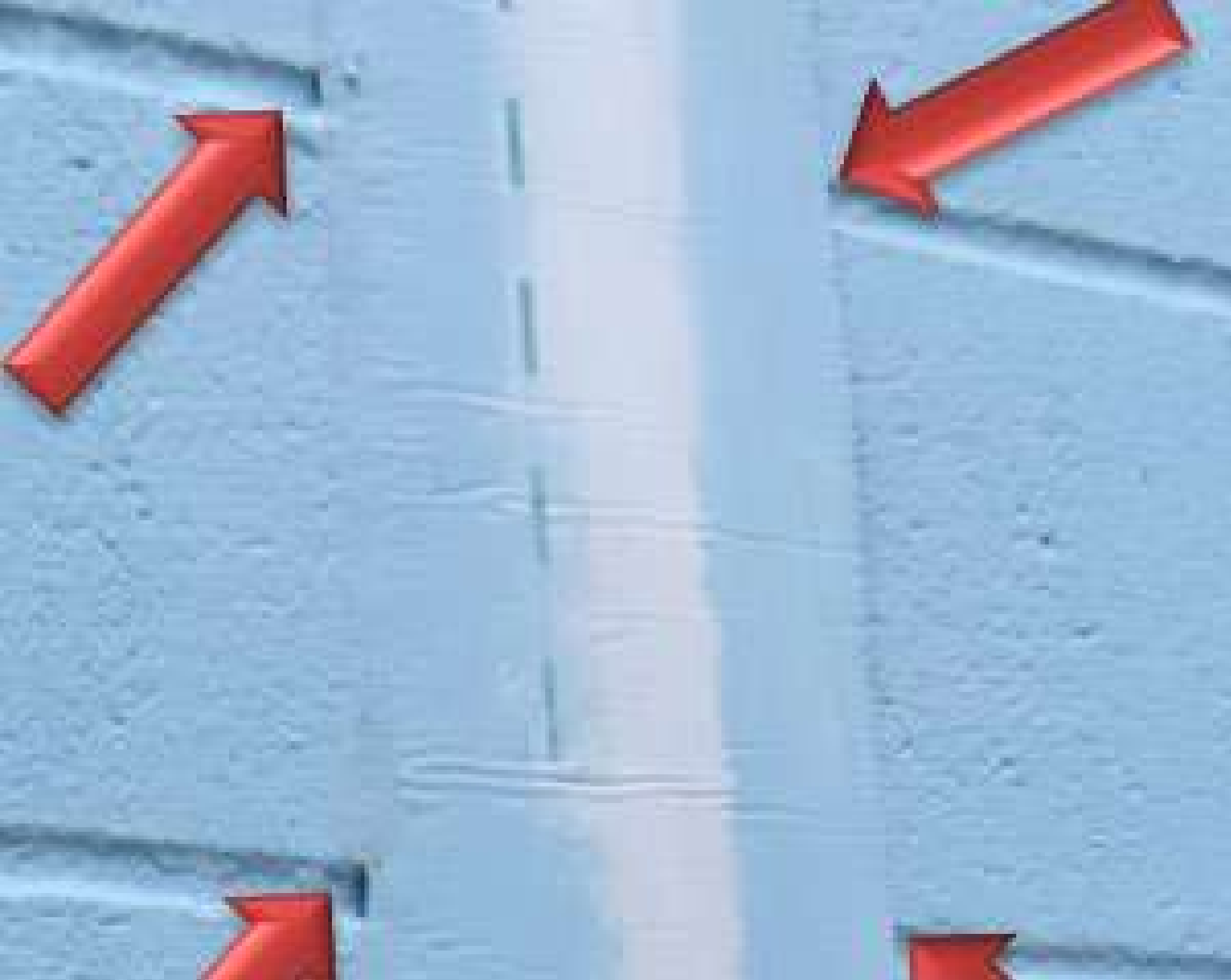
Lightweight CMU  
will absorb more  
liquid material.

Know what CMU is  
being used – CMU  
type might have not  
match specifications  
– ASK THE  
QUESTION



Weight Classification	Density (Ave of 3) (lb/ft <sup>3</sup> )	Maximum Water Absorption (lb/ft <sup>3</sup> )		Minimum Compressive Strength (psi)	
		Average of 3 Units	Individual Units	Average of 3 Units	Individual Units
Lightweight	Less than 105	18	20	1,900	1,700
Medium Weight	105 - 125	15	17	1,900	1,700
Normal Weight	Greater than 125	13	15	1,900	1,700

\* Standard Specification for Loadbearing Concrete Masonry Units, ASTM C90-11b. ASTM International, 2011.



**When installing liquid AVB and peel and stick membrane on CMU, unless the CMU joints are struck flush, the concave joints will create an opening in the air barrier system under the peel and stick membrane.**

**Installing the manufacturer's sealant over the joint between the peel and stick membrane and the liquid AVB will close off the openings that will likely exist at the CMU joints.**

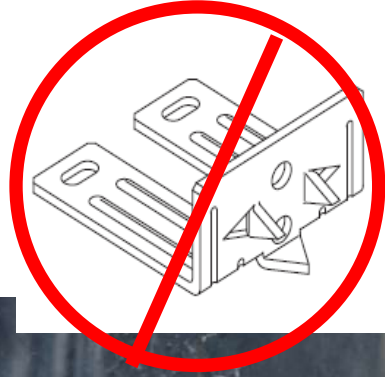
***This may or may not be a requirement from the AVB Manufacturer; however, it will be necessary to avoid gaps at the CMU joints.***



# Type of anchor?



**The anchor will rock and enlarge the penetrations**

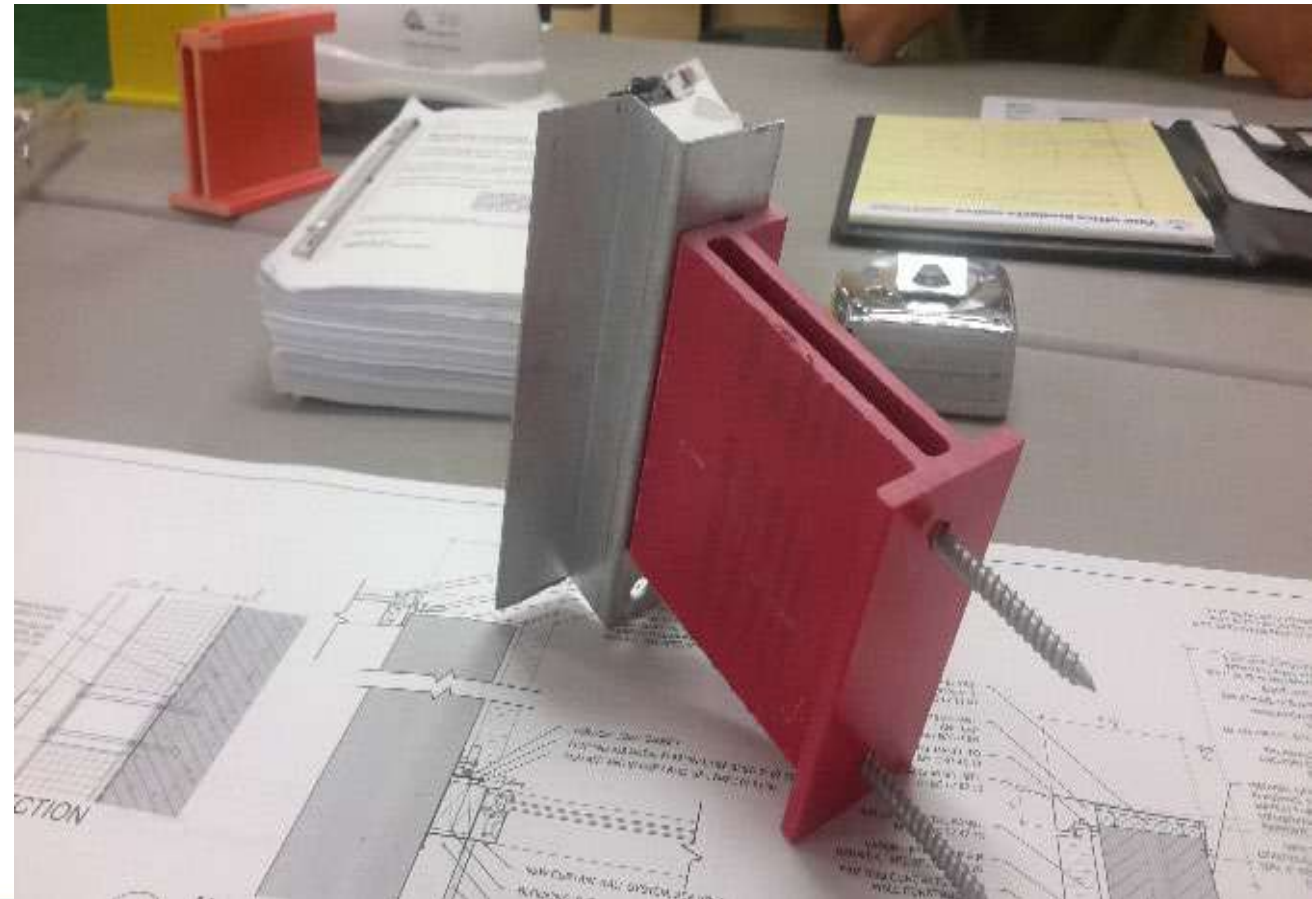


**The anchor is not stiff and is easily bendable**

**There is NO AVB correction after the installation**



**Determine what trades will be penetrating the AVB and set up a meeting to discuss procedures to penetrate and correct the membrane(s)**





# Precast





**Might need epoxy  
filler to create a  
smooth surface**



**PROFILE  
COMPLEXITY**



**Filling the reveals might  
be an option/necessity**





**Review how the ends  
of the precast planks  
are being closed off**

**Must be grouted, not  
plugged with foam**



**Do the panels have a solid  
face?**

**If yes, confirm the finish is  
smooth, otherwise, you might  
get a rough finish**



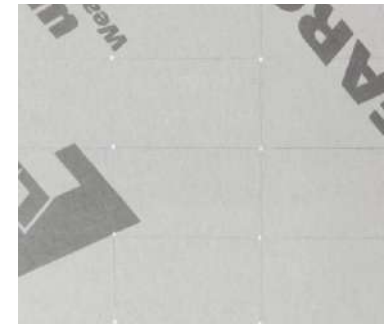
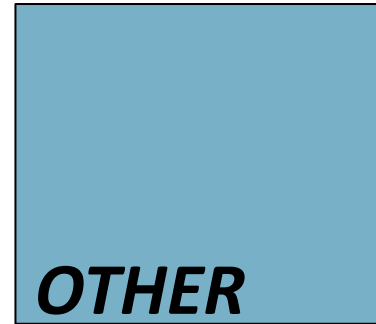


# Gypsum Sheathing





# Substrate challenges



More than 16 psi

**I recommend performing a simple pull-off test on gypsum board sheathing to confirm a min. pull-off of the glass facer**

**Sheathing manufacturer requires a minimum 1/4" gap at the concrete**

**Peel and Stick materials need backing.**

**Make sure that the specifications do not require the sheathing installer to fill the gap**

**Generally, 1/4" maximum gap is acceptable – but always review product installation instructions.**






The specifications likely do not call out for nails to CFMF.

This is probably a VE item.

These generally are not approved by the gypsum bd mfr and should not be used.



Review the attachment of the sheathing early to avoid rework after the AVB need to begin installation



HEADER CONDITION  
= NO EJ NEEDED

SLIP CONNECTIONS



A photograph of a modern building facade with a grid of windows. Handwritten red arrows point from the text 'SLIP CONNECTIONS' to several of the window frames, highlighting the connection details. A red exclamation mark is also visible on the right side of the image.



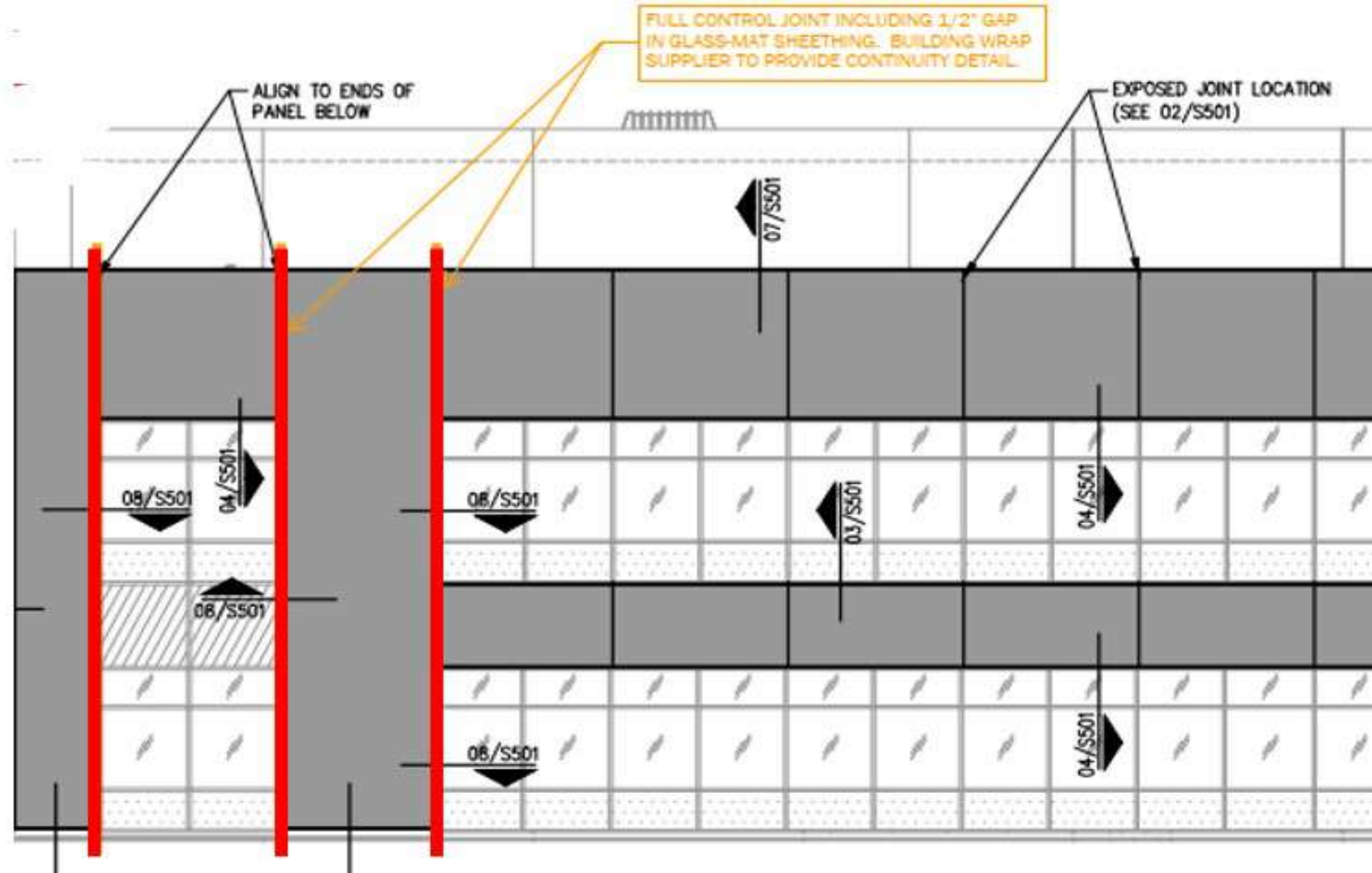


# Differential movement

**Walls supported  
by Foundation**

**Vs**

**Wall supported  
by structure  
(such as  
hanging walls)**



# Accounting for differential movement in elevations



**In these conditions, we need to install an EJ in the framing, sheathing and AVB.**

*(Note –When a window has a header spanning the jamb – no EJ is needed)*

**Talk to your CFMF and AVB subcontractors before starting the work**



# Prefabrication







**Make sure the panels are properly stored on site**









# Wood Sheathing





# Substrate challenges



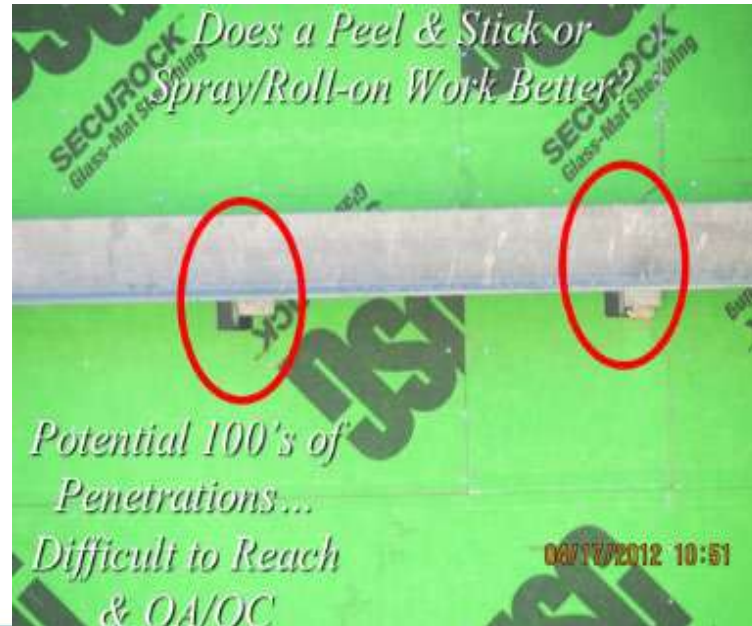
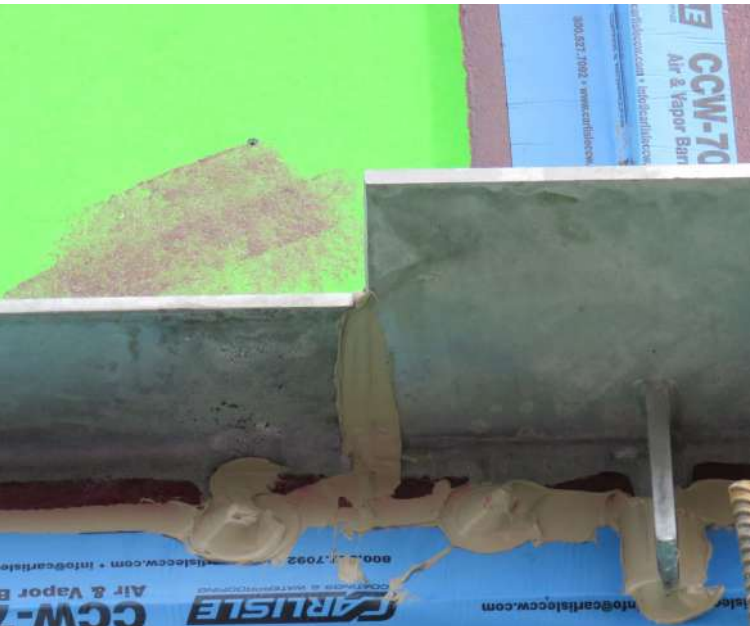
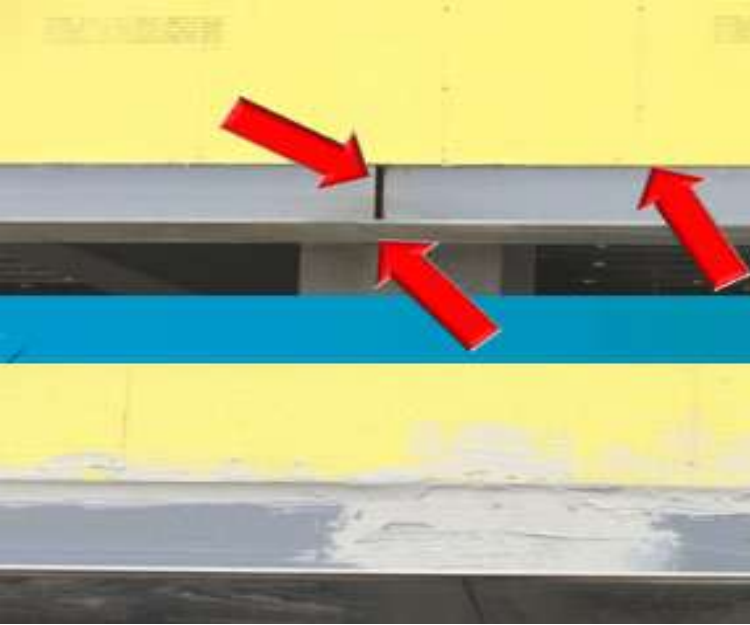


# Steel – Shelf Angles





**When the shelf  
angle becomes  
part of the air  
barrier system**





# Fireproofing







**Spray insulation and AVB cannot be applied under or over  
spray or intumescent fireproofing**

Dear Subscribers,

UL has been asked to provide guidance for the condition where sprayed polyurethane foam would be applied over Sprayed Fire Resistive Materials (SFRM) or Intumescent Fire Resistive Materials (IFRM) Coatings as specified in a UL design. At this time we are prepared to place the following statement in the BXUV, CDWZ and CHPX Guide Information Page:

*Unless otherwise noted in the individual design or certification published in UL's Online Certifications Directory, the application of sprayed polyurethane foam or other insulation over Sprayed Fire Resistive Materials (SFRM) or Intumescent Fire Resistive Materials (IFRM) coatings has not been investigated.*

In addition to this statement UL is considering the development of a certification program for thermal barriers to be used in conditions as that previously mentioned.

If you have any questions,

When UL states it has not been investigated, it likely means that there is no data to prove that the assembly will perform under fire conditions.

Respectfully,

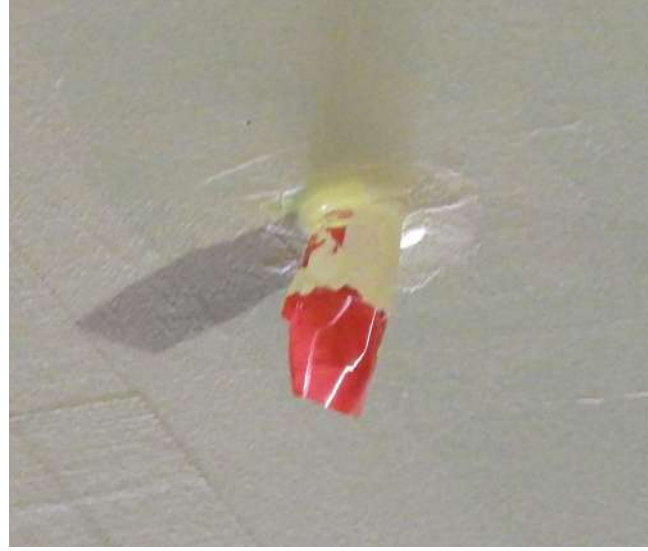


Frederick E. Hervey  
Global Business Manager  
UL LLC  
Frederick.E.Hervey@ul.com



Luke C. Woods  
Principal Engineer – Fire Resistance & Containment  
UL LLC  
Luke.woods@ul.com





**Secondary framing and substrate for spray insulation and AVB will be needed – boxout for electrical & sprinklers**



# MEP-FP Penetrations





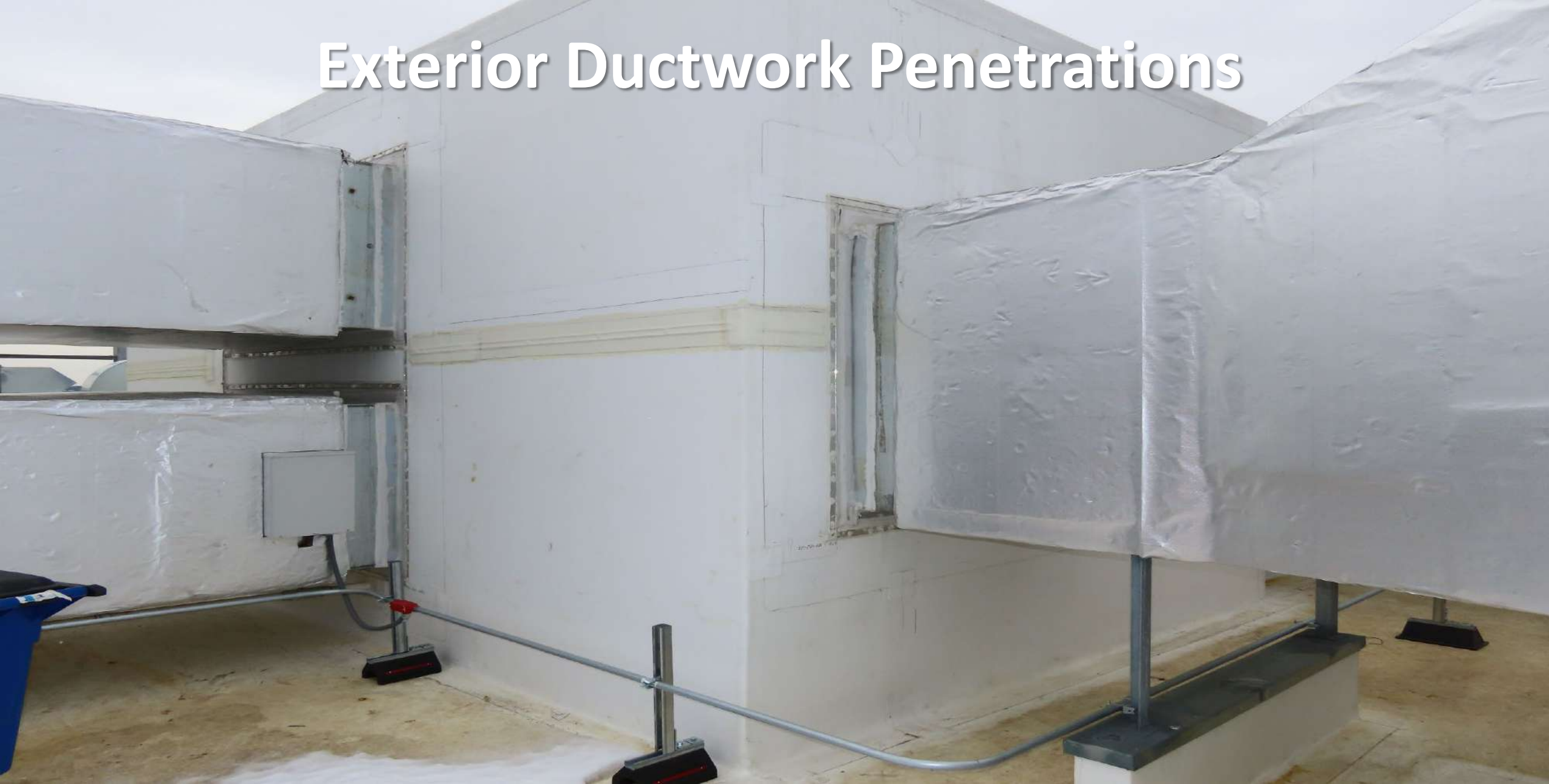


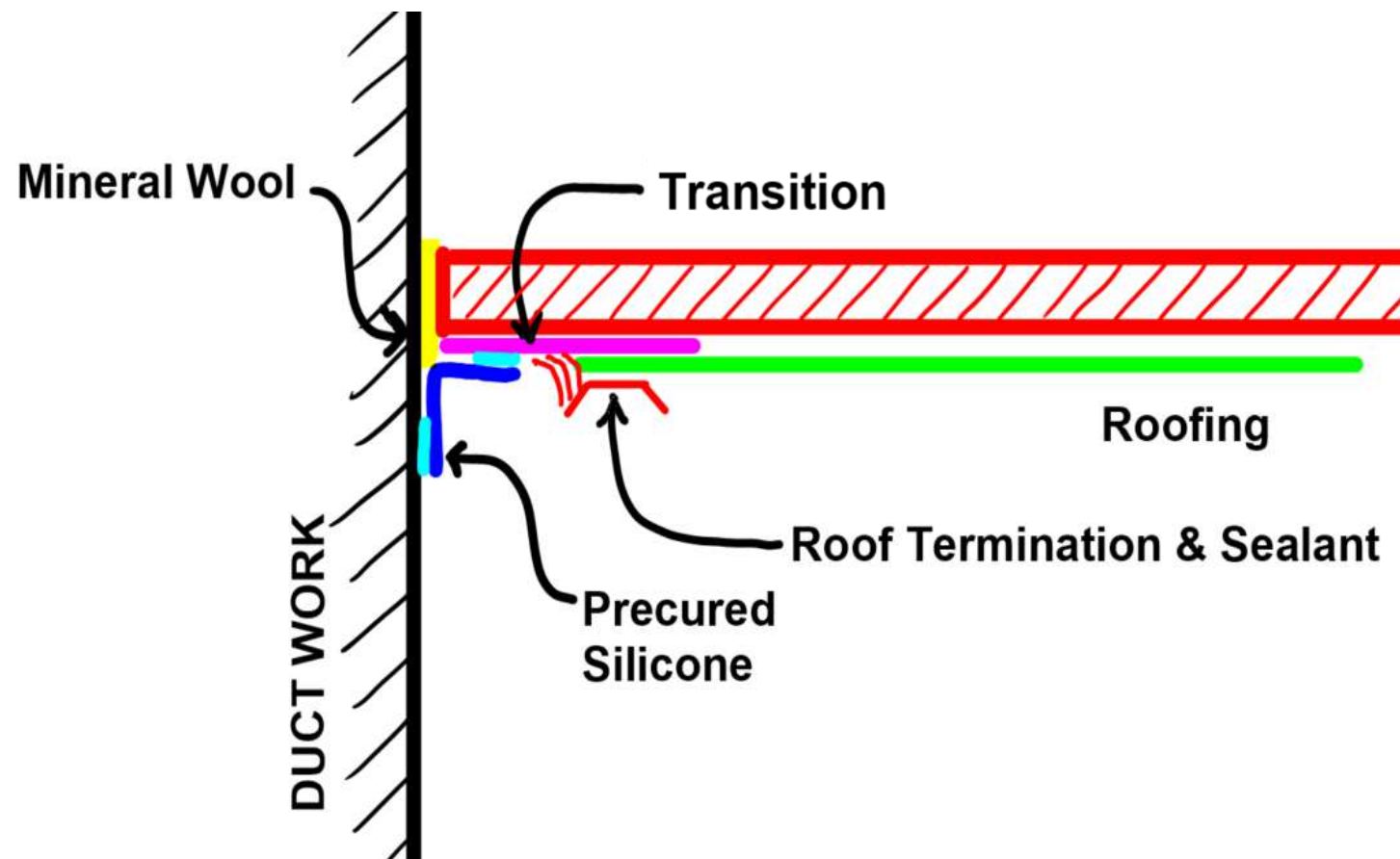






# Exterior Ductwork Penetrations

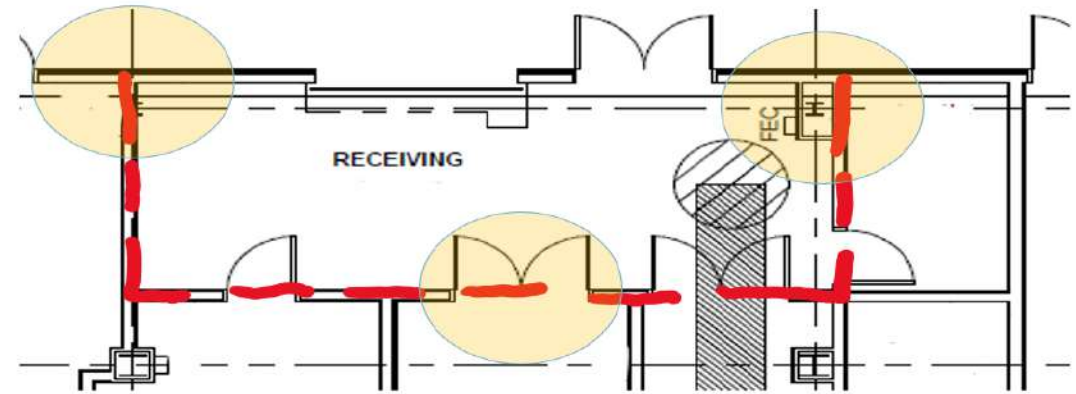
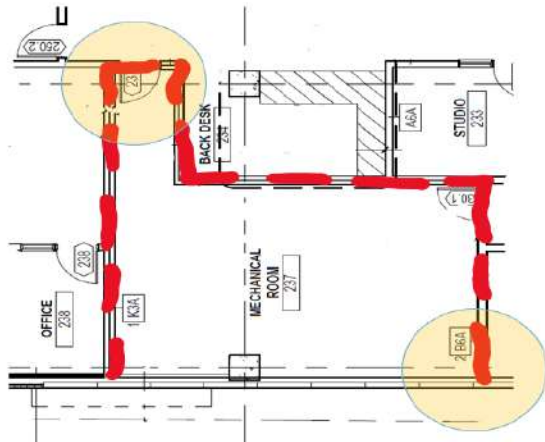
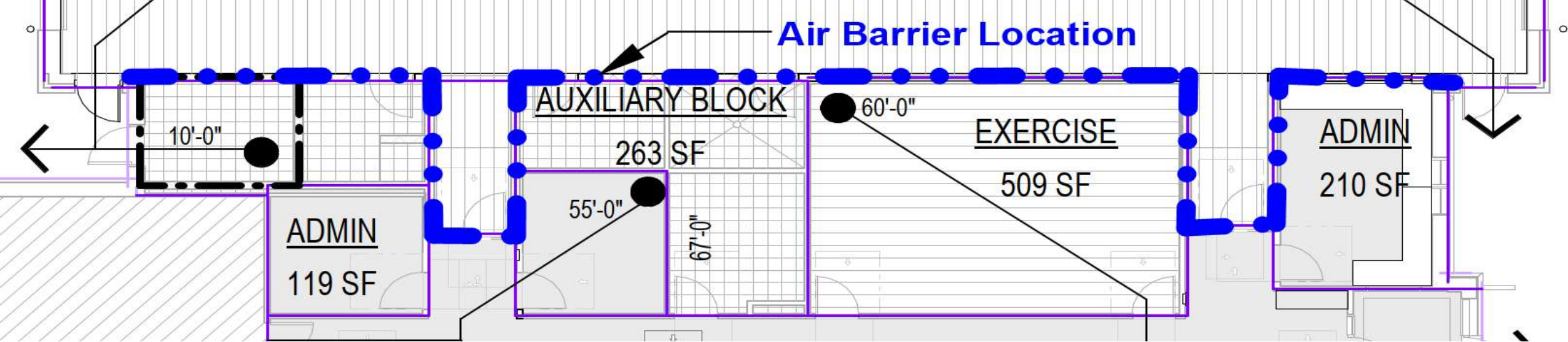






# Interior AVB

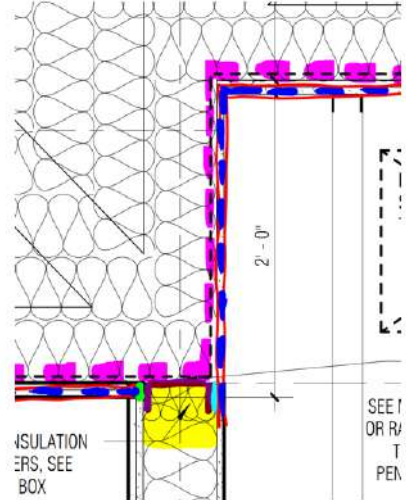




*Sometimes, AVB is needed interior of the building and will separate the building into components...*

Garage □ Loading Docks □ Mech Rooms □ Vented Spaces





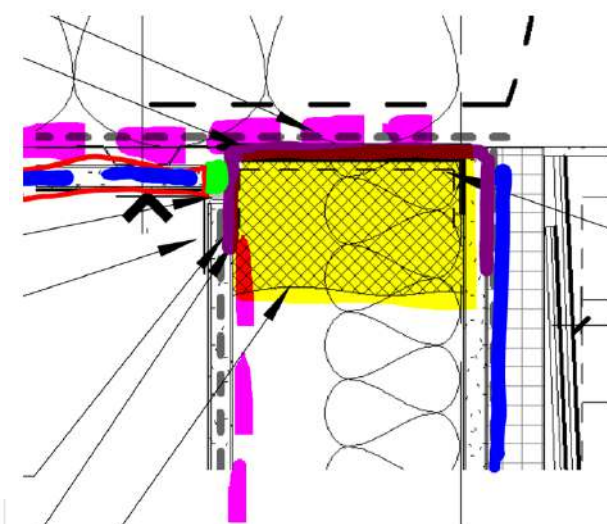
Interior Condition



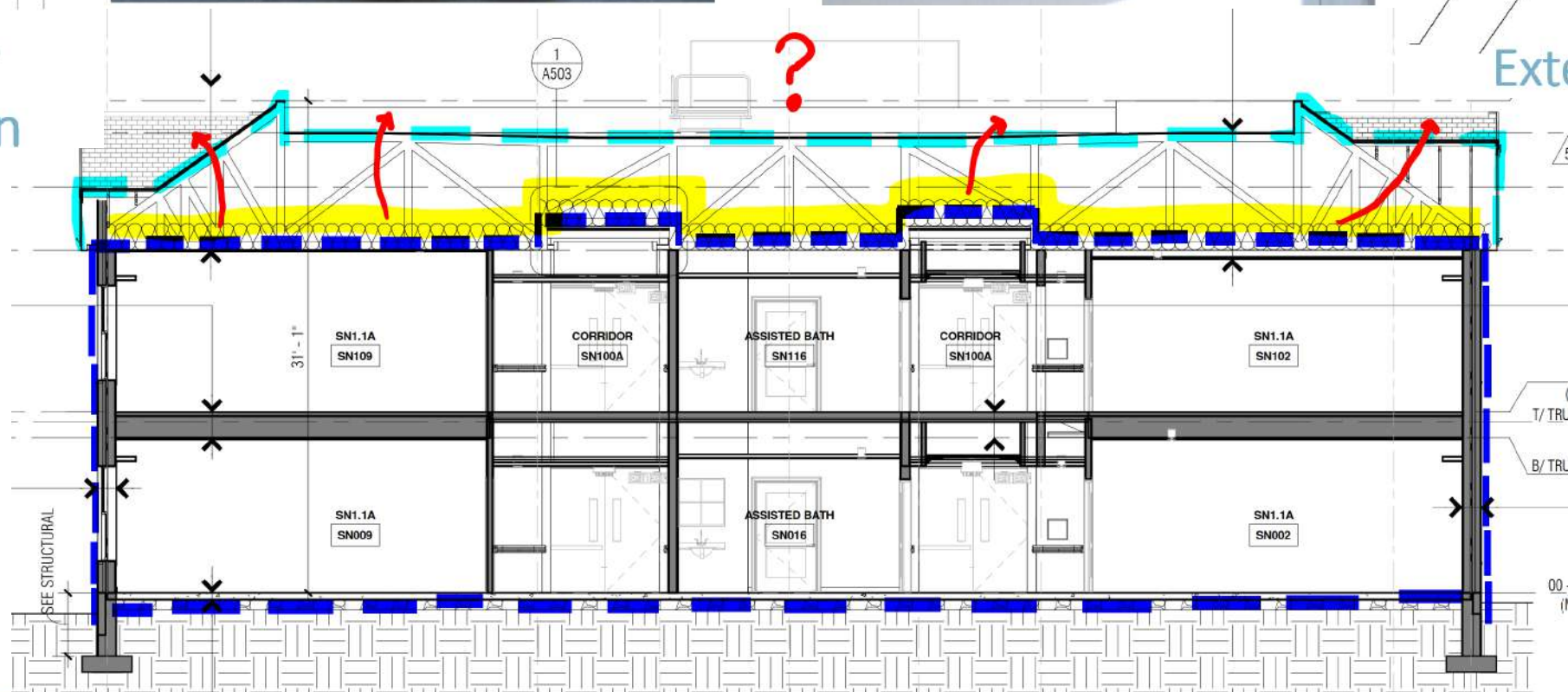
Interior Condition



Exterior Condition



Exterior Condition

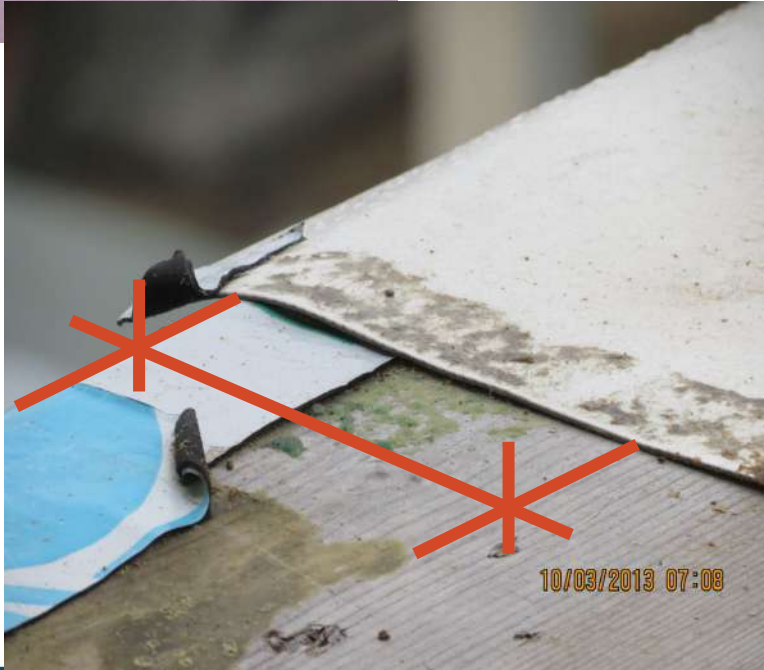
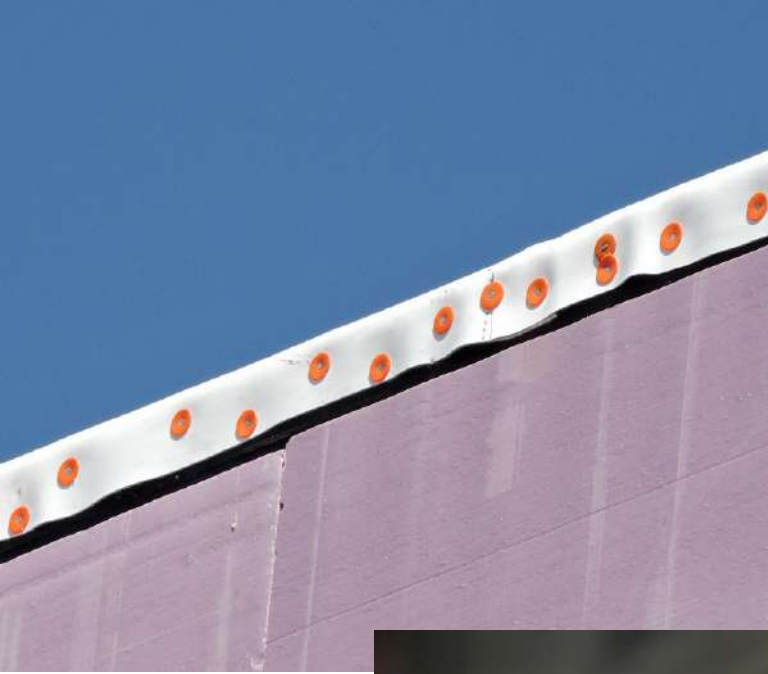


# Roofing

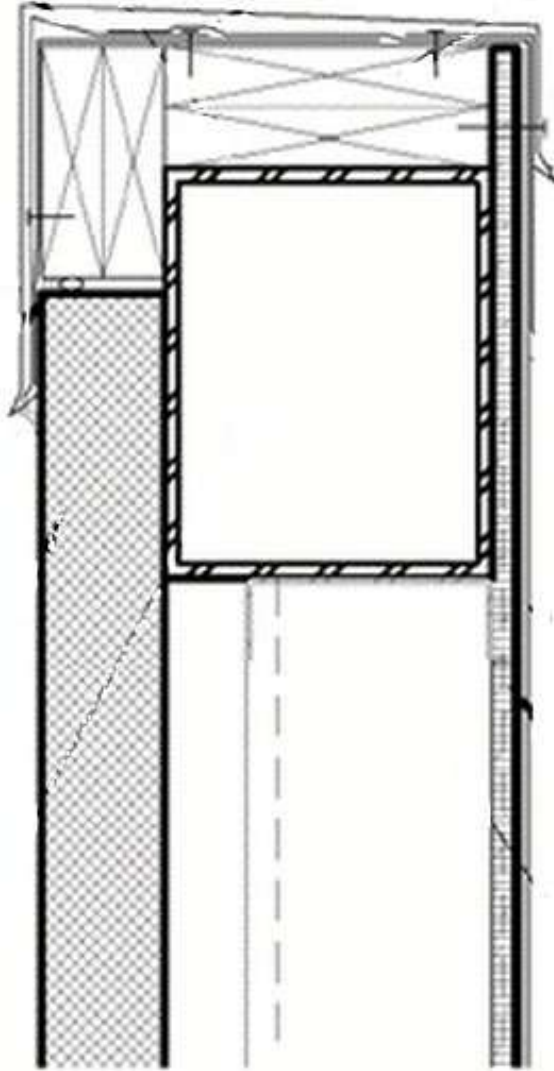




# Typical roof concerns to discuss with the roofer



# Parapet & Metal Wall Panel

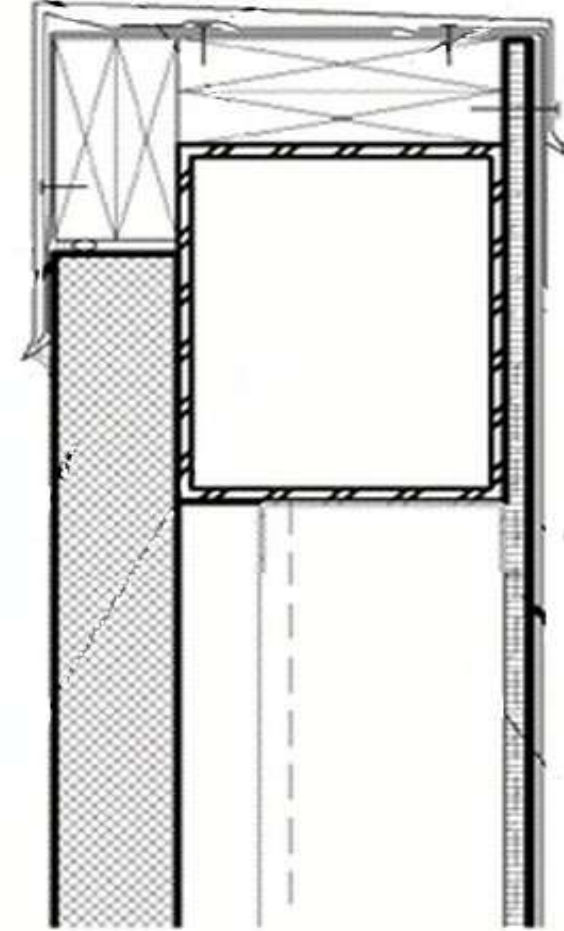


ROOFING

AVB TRANSITION  
MEMBRANE

METAL PANEL FRONT  
FACE AVB PLANE

METAL PANEL BACK  
FACE AVB PLANE







# Sound Deck



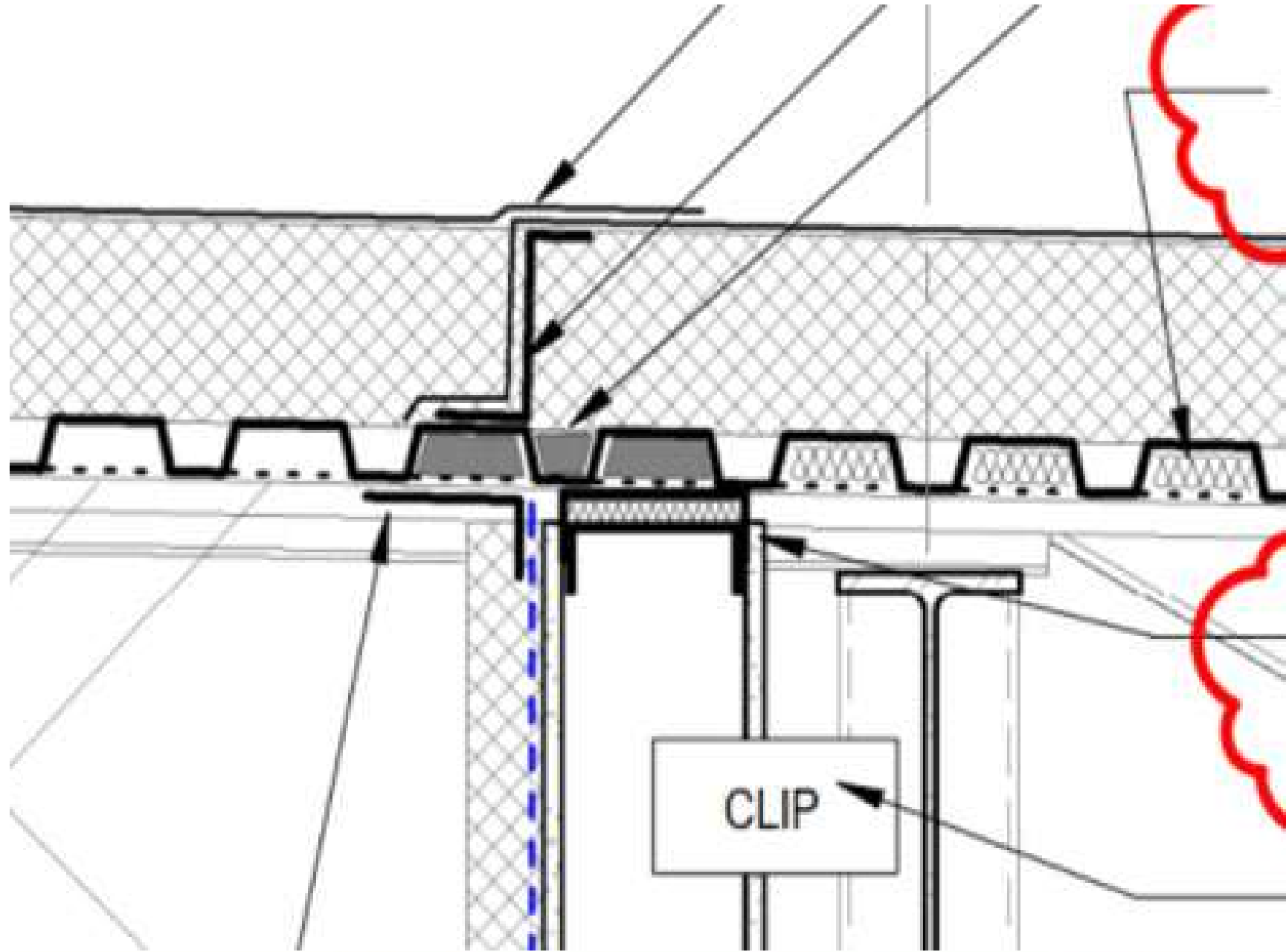




**Review the AVB line and determine where the line of air tightness is located. Work with the steel and roofer**

**The AVB line must go through the metal deck and the perforations must be sealed.**

**Detailing needs to happen in both parallel & perpendicular directions**







**Review the entire system, including the joists extensions or beams.**

**Confirm that fireproofing is not present**

**Each condition is different**





# THANK YOU

**Corey S Zussman**

AIA, NCARB, ALA, RBEC, RRC, REWC, RWC, RRO, CDT, CQM,  
CxA+BE, BECxP, CABS, LEED® AP BD+C  
Level II Thermographer

**Vice President QA/QC**



**Quality  
Delivered**

**AECOM Hunt**

**847.513.2126**

**corey.zussman@aecom.com**

© MARK ANDERSON, ALL RIGHTS RESERVED WWW.ANDERSTOONS.COM



"I'm here about the details."





# abaa2025

building  
enclosure  
conference